

タイトル	Discrimination of Mental Translation by EEG : An Equivalent Current Dipole Source Localization Approach
著者	YAMANOI, Takahiro; TOYOSHIMA, Hisashi; OHNISHI, Shin-ichi; YAMAZAKI, Toshimasa; SUGENO, Michio; SANCHEZ, Elie
引用	北海学園大学工学部研究報告, 35: 107-117
発行日	2008-02-00

Discrimination of Mental Translation by EEG : An Equivalent Current Dipole Source Localization Approach

**Takahiro YAMANOI* • Hisashi TOYOSHIMA* • Shin-ichi OHNISHI*
Toshimasa YAMAZAKI** • Michio SUGENO*** • Elie SANCHEZ******

Abstract

To investigate the brain activity during human recognition of characters and symbols with directional meanings, the authors recorded electroencephalograms (EEGs) from four subjects in viewing and thinking four types of characters (Kanji : Chinese characters being used currently in the Japanese language) and four symbols (arrow) presented on the CRT which means direction for Upward, Downward, Leftward and Rightward. EEGs were averaged for each stimulus type, and event related potentials (ERPs) were obtained. On comparing ERPs of kanji characters with those of arrow symbols with opposite meanings, peak latencies for marked amplitude changes were predominantly similar, but polarities were opposite.

The equivalent current dipole source localization (ECDL) was applied to these ERPs, and ECDs were estimated by use of that. The ECD was estimated at a latency of around 110 ms in the MT (V5) field and then around 300ms in the precentral gyrus. No remarkable differences in this tendency were noted among the eight stimuli. After localization of ECD to the precentral gyrus, with the kanji characters, ECD was localized to the right middle temporal gyrus regardless of direction. ECD was then estimated in areas related to language, such as the Wernicke's area in the left middle temporal gyrus, the left angular gyrus and the left lingual gyrus. ECD was later localized to the left middle frontal gyrus, left inferior frontal gyrus and prefrontal area. ECD was estimated in the precentral gyrus just before the amplitude of ERPs changed remarkably.

With arrow symbols, ECD was localized to the right middle temporal gyrus, and then ECD was estimated in areas related to the working memory for spatial perception, such as the right inferior or right middle frontal gyrus. Then, as with kanji characters, ECD was localized to the prefrontal area and precentral gyrus.

In case of the mental translation, activities were observed on the area around the same latency regardless to the Kanji or the symbol. After on the right frontal lobe, which is so-called the working

* Division of Electronics and Information Engineering, Hokkai-Gakuen University

** Dept. Bioscience and Bioinformatics, Kyushu Institute of Technology

*** Faculty of Information Science, Doshisha University

**** Lab. Informatique Fondamentale, Faculty of Medicine, Aix-Marseille University

memory, ECDs were localized to the Broca's area which is said to be the language area for speech. Like in our preceding researches, the moment of ECD was almost opposite in each other case of opposite meanings.

Keywords : Directional Visual Stimulus, Spatiotemporal Human Brain activity, Electroencephalography, Equivalent Current Dipole Source Localization

1 Introduction

From many researches on the human brain, it has been clear that the processing of visual stimulus is done at first on V1 in the occipital lobe. In the early stage of it, the process on the right visual field is processed on the left hemisphere and the left visual field is processed on the right hemisphere. Then the process goes to the parietal associative area [1].

Higher order process of the brain thereafter has its laterality, for instance, 99% of right-handed and 70% of left-handed have their language area on the left hemisphere as the Wernicke's area and the Broca's area [2,3]. Besides these areas, language is also processed on the angular gyrus (AnG), the fusiform gyrus (FuG), the inferior frontal gyrus (IFG) and the prefrontal area (PFA). Some of the present authors found that processing areas for Kanji (Chinese characters being used currently in the Japanese language) and Hiragana (one type of Japanese phonetic characters) are different in each [4]. In the case of linearly moving stimulus [5], activities were estimated to the right frontal lobe where it is said to be the working area for the spatial recognition. And recognition of single character of Kanji had been cleared [6]. In the present research, we compared brain activities to Kanji and Symbol (arrow) representing directional meaning, by measuring EEGs and by applying the equivalent current dipole source localization (ECDL) method [7,8] to them.

2 Experiment

2.1 Experimental Apparatus and Method

Subjects are four university students from 20 to 21 years old and have normal visual acuity. All are women and their dominant hand and eye are the right ones. The subjects put on an electrode cap and watched the 21inch CRT 30cm in front of them. Each stimulus was displayed on the CRT. Stimuli had been stored on the disk of a PC as a file and they were presented in random order. Their heads were fixed on a chin rest on the table. Positions of electrodes on the cap were according to the International 10–20 system and other two electrodes were fixed on the upper and lower eyelids for eye movement monitoring. Impedances were adjusted to less than 10k Ω . Reference electrodes were put on both earlobes and the ground electrode was on the base of the nose. Electroencephalograms (EEGs)

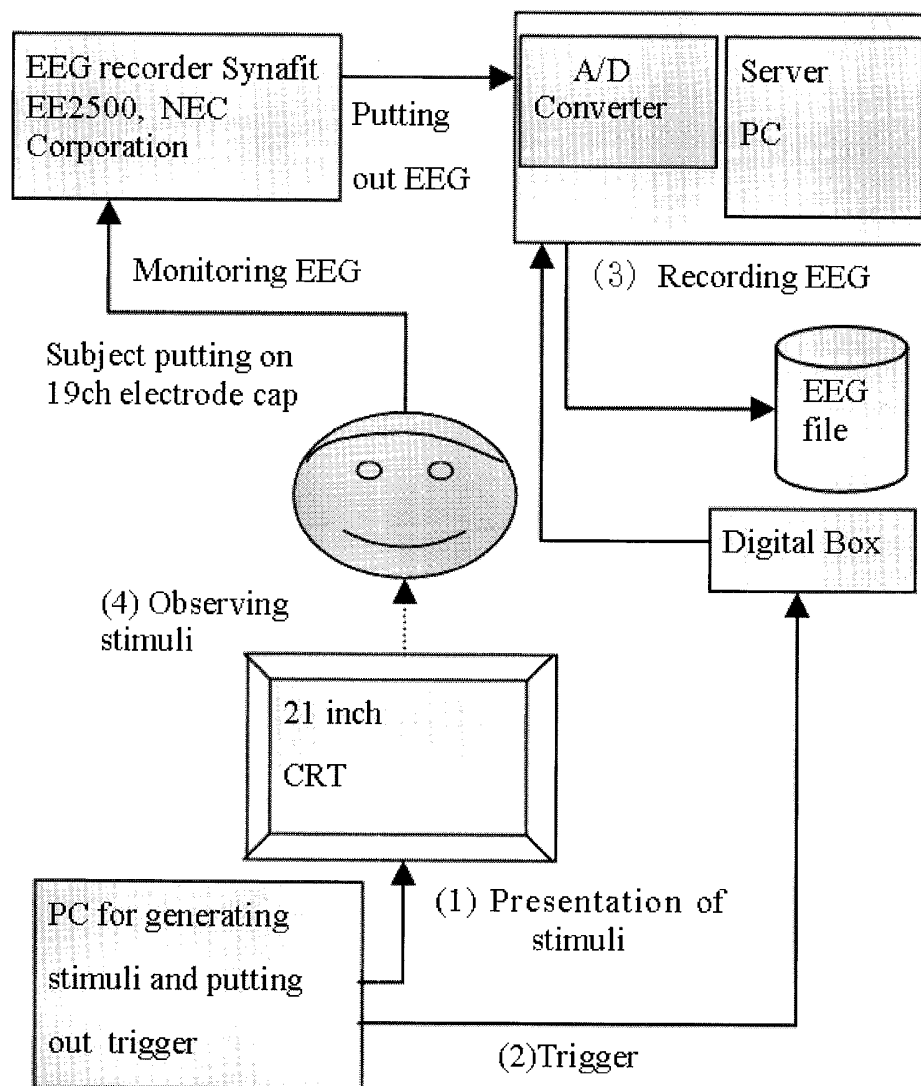


Fig.1. Experimental apparatus

were recorded on the digital EEG measuring system (NEC Corporation, Synafit EE2500); the amplitude was $5\mu\text{V/V}$, the frequency band was between 0.15 and 100Hz. Analog outputs were sampled at a rate of 1kHz and stored on a hard disk in a PC (Fig.1).

2.2 Stimulus Presentation of experiment

In this experiment, subjects were presented a single character, which has apparent directional meaning, such as “上” (Upward), “下” (Downward), “左” (Leftward), “右” (Rightward), “↑”, “↓”, “←”, and “→”. The first period, stimulus was not presented. The second period, stimulus was presented in the center of CRT during 2000ms, and followed during a masking period of 3000 ms. During the last period, visual stimulus was hidden and subject read silently the direction of stimulus. Each stimulus was presented at random, and measurement was repeated thirty times for each

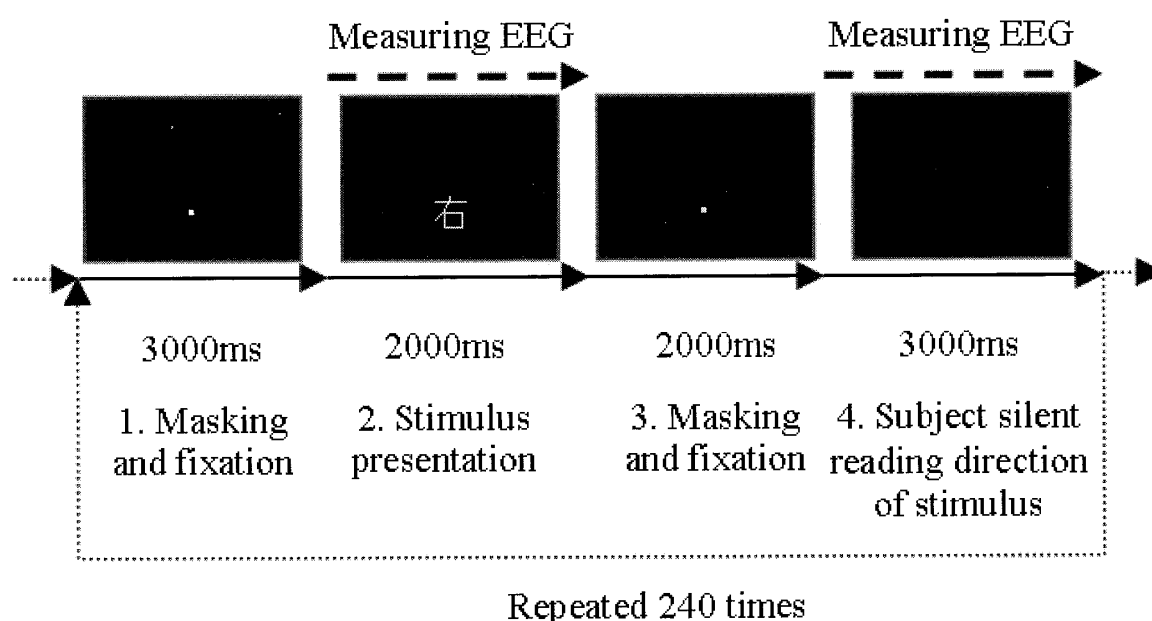


Fig. 2. Timing chart of the present experiment

stimulus, so the total was 240times. In these cycles, we measured EEGs during one second and last periods of 2000ms (Fig.2).

From the experimental instructions, subjects were forced to recognize a direction by character or arrow which was displayed on the center of CRT screen. So we measured brain activities during recognition of direction.

2.3 Analysis by equivalent current dipole source localization

We have measured EEGs of each visual stimulus. In order to effectively execute equivalent current dipole source localization (ECDL), both data were summed and averaged according to the type of directions and the subjects in order to get event-related potentials (ERPs). Summing these ERPs of the directional types respectively, then the ECDL method was applied to each ERPs by each subject. Because the number of the recording electrodes was 19, three ECDs at most were estimated by use of the PC-based ECDL analysis software “SynaCenter [8]” (NEC Corporation). The goodness of fit (GOF) of ECDL was over 99.8%.

3 Experimental Results

3.1 Result of the experiment

We have measured EEGs of the character and the symbol experiments ; both data were summed and averaged according to the type of directions and the subjects in order to get ERPs.

We analyzed ECDs of each subject, both data have large potentials around 400ms (Fig.3).

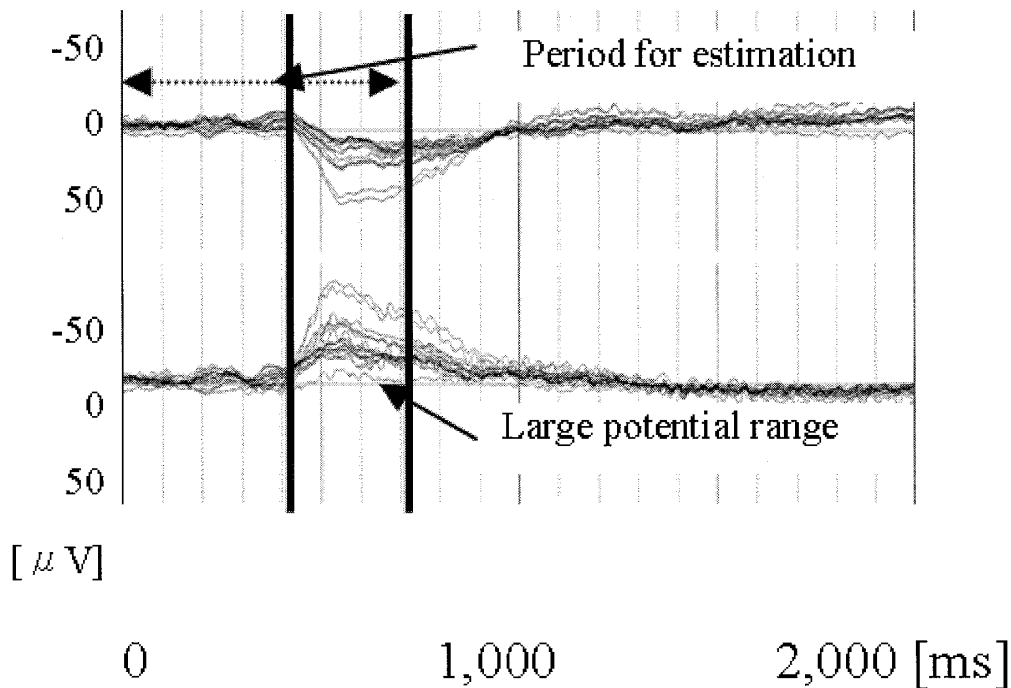


Fig. 3. Example of large potential range of ERPs (between two bold lines) and range for estimation (shown by arrows)

We compared these ERPs by the type of stimulus and by the type of direction. On comparison between arrows with opposite direction, peak latencies were almost the same but polarities of potentials were inversed. More precisely, the maximal potential of type “↓” was delayed from that of “↑”, and that of “←” was delayed from that of “→”. Comparing with Kanji of opposite directions, polarities of potential were inversed. And the latency of maximal potential of type “下” was delayed from that of “上”, and the latency of maximal potential of “左” was delayed from that of “右”.

When comparing with ERPs of symbols and characters, no large difference was observed until 250 ms. The ECDs were localized to the right MT area around 130ms, to the right postcentral gyrus (PstCG) at 200ms, and to the precentral gyrus (PrCG) at 270ms.

In the case of arrow, at latency from 300ms to the latency when amplitude changes remarkably, though their latencies had some difference, ECDs were localized to the right and the left middle frontal gyrus (MFG) and to the right inferior frontal gyrus (IFG). Regardless the direction of arrow, ECDs were localized to the right middle temporal gyrus (MTG) around 380ms, then ECDs were localized to the superior frontal gyrus (SFG) just before the remarkable change of amplitude (Table1).

In the case of Kanji, regardless to the direction, ECDs were localized to the left MTG and the Wernicke’s area around 350ms, then to the left AnG and the left lingual gyrus (LG) after 380ms. Then ECDs were localized to the left IFG, the left PFA and the left SFG, and the PrCG just around the la-

Table1. Relationship between localized source and its latency after PrCG (Subject MM), Stimulus : Arrow

Stim.	right PrCG	Wernicke's area	left ITG	left AnG	left SMG
↑	260	–	356	–	451
↓	281	–	375	–	445
←	267	–	374	–	457
→	281	–	383	–	464

left PrCG	right MFG	Broca's area	left MFG	right MFG
472	496	–	583	622
461	493	–	599	619
468	495	–	578	615
469	507	–	580	619

[ms]

Table2. Relationship between localized source and its latency after PrCG (Subject MM), Stimulus : Kanji

Stim.	right PrCG	Wernicke's area	left ITG	left AnG	left SMG
上	268	379		397	451
下	268	345		426	449
左	272	370		429	442
右	277	370		414	449

left PrCG	right MFG	Broca's area	left MFG	right MFG
464	493	590	650	695
470	497	580	630	691
477	514	577	634	692
464	493	583	635	685

[ms]

tency of remarkable change of amplitude (Table2). This tendency is almost the same for all subjects (Table3).

In the case of the silent reading, activities were observed on the area around the same latency regardless of the Kanji or the symbol. After on the right frontal robe (the IFG and the MFG), which is so-called the working memory for spatial recognition, ECDs were localized to the Broca's area which is said to be the language area for speech (Table4).

4 Discussion

Although before latency of 300ms, ECDs were localized to the left inferior temporal gyrus (ITG) that supposed to be one of the linguistic areas, no difference was observed on estimated areas and its latencies regardless of the type of stimulus and directions. So we suppose the primary visual process-

Table3. Relationship between localized source and its latency after PrCG (character “左 : leftward”)

Subject	right PrCG	Wernicke's area	left ITG	left AnG	left SMG
MM	277	370	–	414	449
MY	272	354	–	422	442
HY	262	359	–	386	435
SI	263	372	–	417	449

left PrCG	right MFG	Broca's area	left MFG	right MFG
470	497	580	630	691
464	493	590	650	695
464	493	583	635	685
477	514	577	634	692

[ms]

Table4. Relationship between localized source and its latency (Subject MM), Silent reading

Stim.	left MFG	right IFG	right AnG	left AnG	Broca's area
上	308	451	509	577	610
下	303	468	494	556	608
左	316	455	478	551	611
右	321	459	472	551	622
↑	307	486	490	549	613
↓	296	473	494	527	607
←	313	475	497	531	623
→	311	454	480	537	613

[ms]

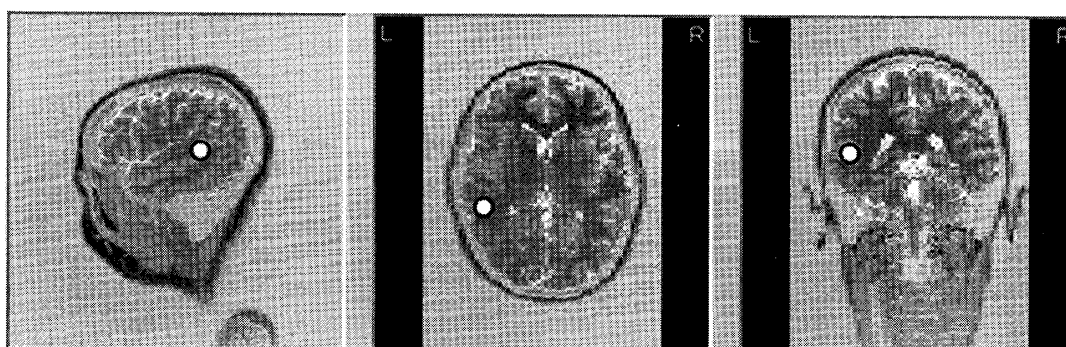


Fig. 4. Example of ECD localized to the Wernicke's area at 378ms (Subject MM), stimulus : downward “下” ing were done during this period until the PrCG.

After 300ms, in the case of arrow, most ECDs were rather localized to in the right hemisphere such as the right IFG, MFG and the PFA, than the left hemisphere. On the other hand, in case of Kanji, ECDs were localized to the Wernicke's area (Fig.4), the left AnG, the left FuG and the Broca's area (Fig.5) that supposed to be the linguistic areas. On the contrary, in case of arrow, no ECD was local-

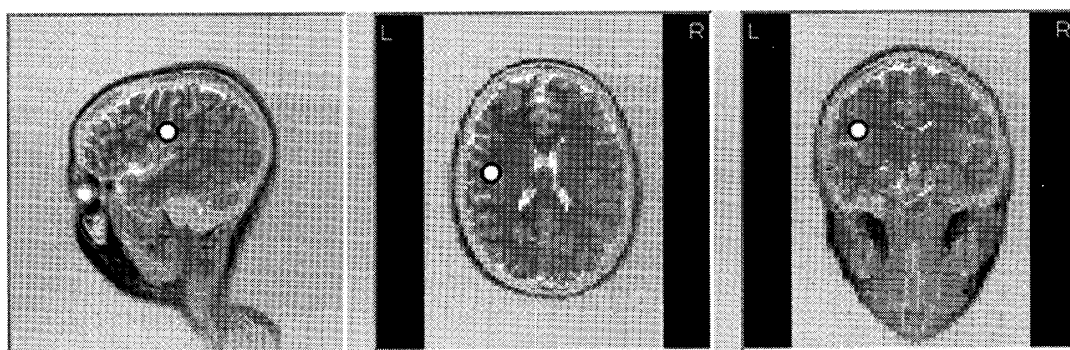


Fig. 5. Example of ECD localized to the Broca's area at 378ms (Subject MM), stimulus: downward “下”

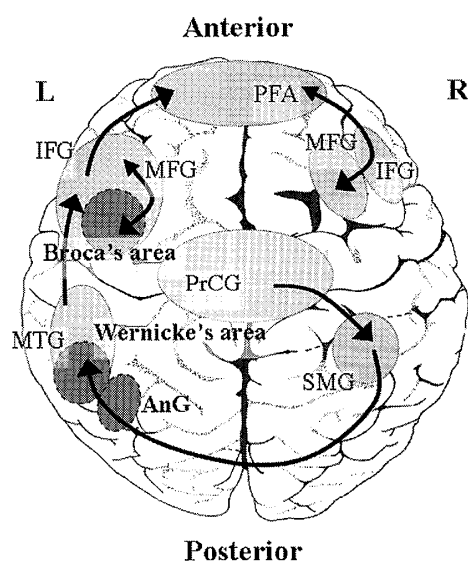


Fig. 6. Spatiotemporal transition of estimated ECDs after PrCG (Stimulus: Kanji)

ized to these areas, these processes were done as an image processing, and furthermore the latency of remarkable change of amplitude had some delay, in comparison with Kanji. So even with the same directional stimulus, there is a difference in areas and in route between Kanji (Fig.6) and arrow (Fig.7).

In comparison, the same type stimulus has opposite direction (localized to the right IFG, Fig.8), the direction of localized dipole was opposite during EEGs had opposite polarities (Fig.9). This fact agrees with our preceding experiments, so the directional information supposed to be related with a direction of dipole itself.

In the case of silent reading, tendency of estimated ECDs was different to those in the stimulus recognition. Regardless to direction in stimulus, no ECD was estimated in the Wernicke's area, which is said to be the hearing language area, however ECDs were localized to the right frontal area which is so-called the working memory and after that ECDs were estimated to the Broca's area (Fig.10). The moment of ECDs localized to the right frontal area were almost counter in each other case of inverse

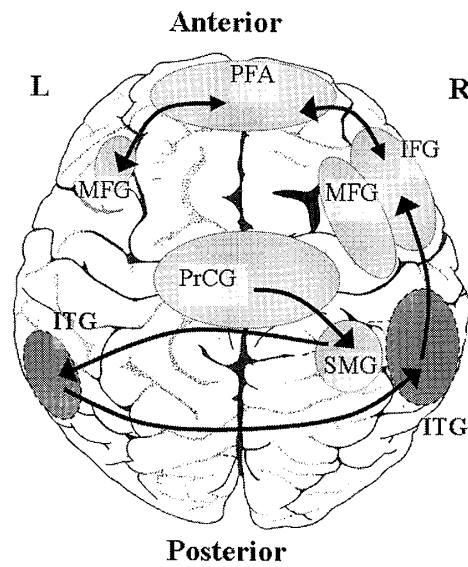


Fig. 7. Spatiotemporal transition of estimated ECDs after PrCG (Stimulus : Arrow)

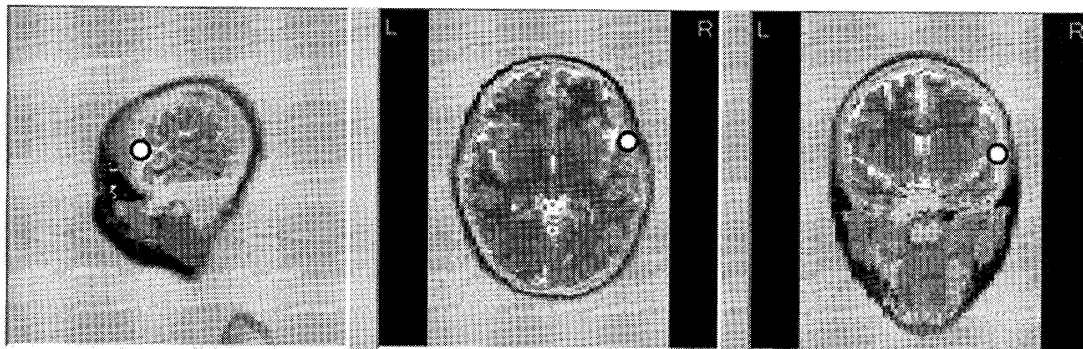


Fig. 8. Example of ECD localized to the right IFG at 401ms (Subject MM), stimulus : downward “下”

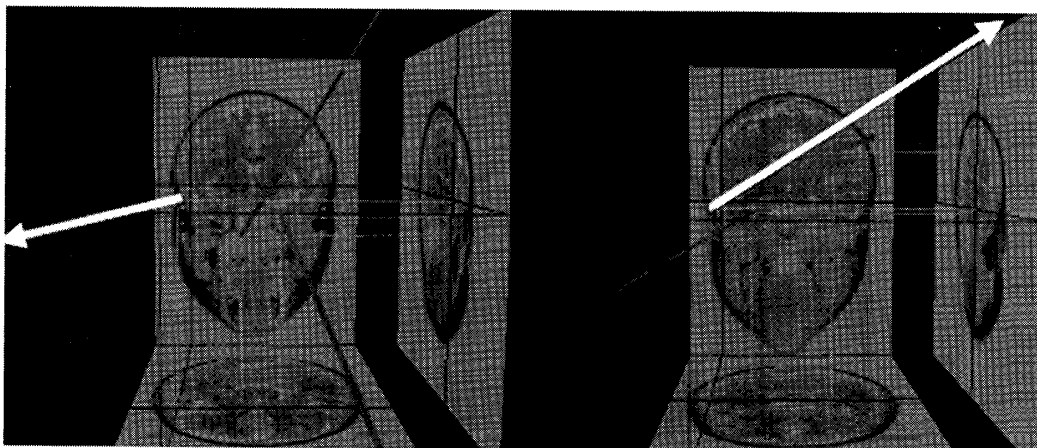


Fig. 9. In comparison of the moments of ECDs localized to the right IFG between upward and downward. In the case of ERPs' polarities were in reverse, ECDs' moment shown by white arrow were reverse direction (left : upward, right : downward)

direction just the same as the preceding research [5] (Fig.11).

From the results, it will be possible to estimate directions during silent reading by the moment of

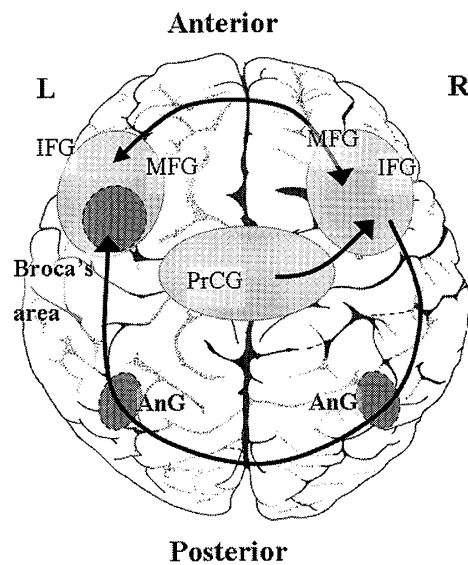


Fig. 10. Spatiotemporal transition of estimated ECDs after PrCG (Silent reading)

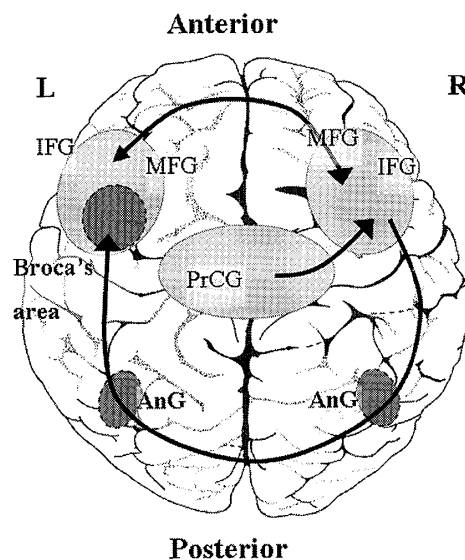


Fig. 11. Example of ERPs (arrows denote latencies where signs of potential are opposite in each other and both ECDs were localized to the right IFG), Upper : in the case of stimulus “上”, lower : in the case of the stimulus “下”(Silent reading)

ECDs on the right prefrontal area, hence by EEGs measured near to the prefrontal area.

Acknowledgment

This research is partly supported by the grant from the ministry of education, sports, science and technology to the national project in the High-tech Research Center of Hokkai-Gakuen University.

References

- [1] R. A. McCarthy, E. K. Warrington : *Cognitive neuropsychology : a clinical introduction*, Academic Press, 1990.

- [2] M. Iwata : *The Brain and the Language* (in Japanese), Kyoritsu Publishing Ltd., 1996
- [3] A. Yamadori : *neuropsychology* (in Japanese), Igakusyoin, 1985
- [4] T. Yamanoi, T. Yamazaki, J. Vercher, E. Sanchez and M. Sugeno, Dominance of recognition of words presented on right or left eye –Comparison of Kanji and Hiragana–, *Information Processing and Management of Uncertainty in Knowledge-Based Systems 2004 Proceedings*, Vol.2, pp.1167–1173, 2004N. Geschwind, & A. M. Galaburda, *Cerebral Lateralization, The Genetical Theory of Natural Selection*. Oxford. Clarendon Press, 1987.
- [5] T. Yamanoi, H. Toyoshima, T. Yamazaki, S. Ohnishi, Localization of brain activity during perception of circle movement by use of equivalent current dipole analysis, 2004 IEEE international Conference on Fuzzy Systems Proceedings, VOLUME 1, pp.321–324, 2004
- [6] T. Yamanoi, T. Yamazaki, J.-L. Vercher, E. Sanchez, M. Sugeno, Dominance of recognition of words presented on right or left eye –Comparison of Kanji and Hiragana–, to appear in *Modern Information Processing, From Theory to Applications*, B. Bouchon-Meunier, G. Coletti and R.R. Yager Eds., Elsevier Science B.V., 2006
- [7] Y. Kuroiwa, & M. Sonou (Eds.) : *Clinical Evoked Potential Handbook* (in Japanese), Reed Education & Professional Publishing Ltd., 1994.
- [8] Yamazaki, T., Kamijo, K., Kiyuna, T., Takaki, Y., Kuroiwa, Y., Ochi, A. and Otsubo, H. : PC-based multiple equivalent current dipole source localization system and its applications, *Res. Adv. in Biomedical Eng.*,2, 2001, pp.97–109.